

JH-115

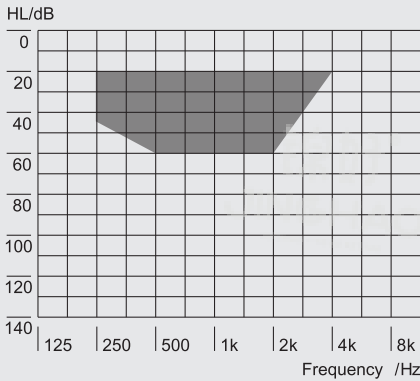


Product feature

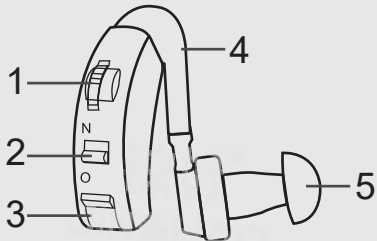
- 1. Ergonomic fit behind the ear, barely visible
- 2. Amplifies the volume of all sounds indoors and outdoors
- 3. Classic and Reliable
—Classic Design & VC Control
- 4. Knowles Microphone
- 5. Single ear use, suitable for left or right ear

Technical Data	IEC 60118-7:2005 Test Data (2cc-coupler)	ANSI S3.22-2003 Test Data (2cc-coupler)
Operating Voltage	DC 1.0~1.45V	DC 1.0~1.45V
Acoustic Gain (50 dB SPL)		
HFA	29.0dB	29.1dB
1600Hz	23dB	24dB
Peak Value	39.6dB	N/A
Max. output		
HFA	116.1dB	116.1dB
1600Hz	112dB	112dB
Peak Value	125.9dB	125.9dB
Reference Test Gain	29.1dB	31dB
Induction Coil Sensitivity	/	/
Frequency Range		
Total Harmonic Distortion (500/800/1600Hz)	200Hz-3701Hz 0.0%/0.4%/0.6%	200Hz-3701Hz 0.0%/0.3%/0.6%
Equivalent Input Noise	32.1dB	32.3dB
Battery Current	3.4mA	3.4mA
Battery Type	Zinc-air battery	Zinc-air battery
Working Time	N/A	N/A

FITTING RANGE



1. Volume Control
2. ON/OFF
3. Battery Door
4. Ear Tube
5. Ear Dome



JH-115

Accessories



Ear Dome(XL)



Ear Dome(L)



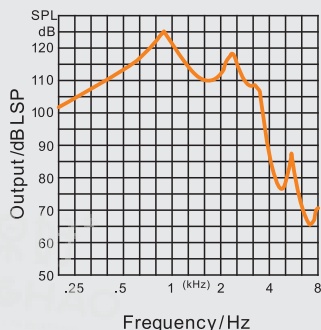
Ear Dome(M)



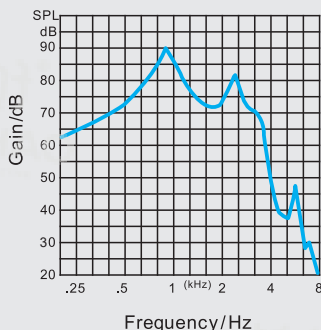
Ear Dome(S)

All Curves are measured with fonix 8000 hearing aid test system, 2cc-coupler ,IEC 60118-7.All sound pressure levels are referred to 20μPa (OSPL90 Output/FOG50 Gain/Reference Test Gain(RTG))

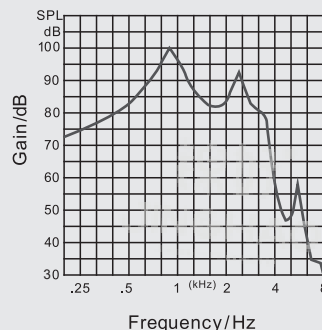
OSPL₉₀ Output



FOG₅₀ Gain



Reference Test Gain (RTG)



WARNING! Choking hazard posed by small parts. Infants, small children and persons of mental incapacity must not wear the hearing instrument without appropriate supervision.

*The data sheet report is only responsible for the sample